

EASY-MARK™ Labeling Software

Generate labels quickly and easily with *EASY-MARK™* Labeling Software with market specific labeling application tools that assist in creating optimum signs, pipe markers, and labels for many common labeling applications. *EASY-MARK™* saves time and money in creating labels for wire/cable, network components, and safety identification. Features such as WYSIWYG user interface, data import, symbol import, barcoding and pre-loaded label formats make label creation easy and flexible.

Now with
Barcoding!



PATENT
PENDING

Key Features

Benefits

Market specific labeling application tools	Reduces time (up to 75%) and errors by: simplifying label creation for network components, panel building, construction and maintenance; selecting and formatting the optimum label for your specific application; automatically generating standards (OSHA, TIA, ANSI, etc.) compliant legends on your label
Barcoding	Easy-to-use wizard quickly generates barcodes in the following symbologies: Codabar, Code 128 (A, B, C, Auto), Code 39, Code 39 Extended, Code 93, Code 93 Extended, Data Matrix, EAN/JAN 13, EAN/JAN 8, Interleaved 2 of 5, MSI Plessey, PDF417, UCC128, UPC-A, UPC-E (System0, System1), BC-Postnet
Multiple language options	Instructions and user interface are available in English, Chinese, French, German, Italian, Korean, Portuguese and Spanish
WYSIWYG (What You See Is What You Get)	Program allows you to see labels on-screen as they will appear when printed to improve productivity and reduce errors
Alpha and numeric serializations	Reduces time required to create incremented legend lists
Data file import	Reduce time and errors by importing data previously created in EXCEL [®] (.XLS) files or comma separated value (.CSV) files onto labels
Image library and symbol import	Choose from over 100 standard symbols for electrical and data communications applications and import .jpeg, .bmp, .gif, or .wmf symbols
Pre-loaded PANDUIT label formats	Labels for thermal transfer, dot matrix, laser and ink jet, including <i>ULTIMATE ID®</i> Network Labeling System, can be created quickly and easily
Quick text entry	Enter text for individual labels or an entire range of labels
Upgradeable	Future revisions and enhancements including additional markets and application tools will be available on the <i>PANDUIT</i> website

System Requirements

- 64 MB of hard drive space and 64 MB of RAM (256 MB of RAM recommended)
- Mouse or compatible pointing device
- WINDOWS[®] 2000, NT 4.X, or XP
- CD-ROM Drive

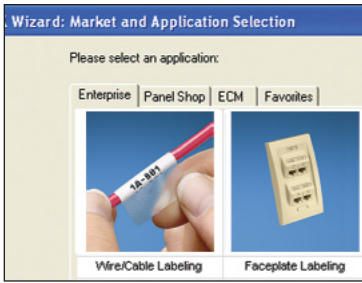
Ordering Information

Part Number	Description	Std. Pkg. Qty.	Std. Ctn. Qty.
PROG-EMCD3	<i>EASY-MARK™</i> Labeling Software, CD-ROM.	1	10

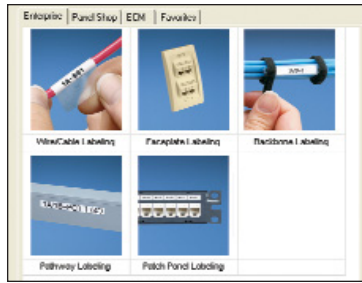
[®]WINDOWS, WINDOWS 2000, NT 4.X and XP, and EXCEL are registered trademarks of Microsoft Corporation in the United States and/or other countries.

EASY-MARK™ Labeling Software

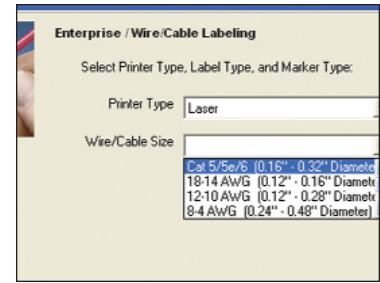
NEW! Now With Market Specific Labeling Application Tools



Select Specific Market



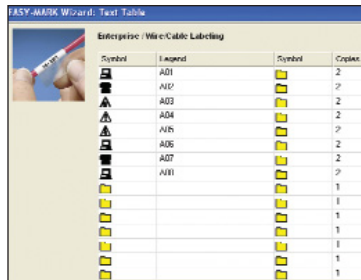
Select Labeling Application



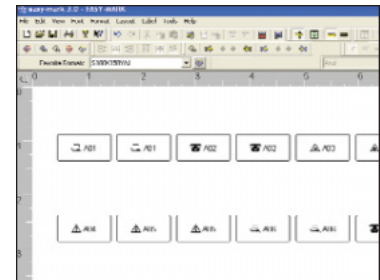
Select Details of Application



Select Method of Data Input



Enter Data



EASY-MARK™ Automatically Selects and Populates Labels

Network Application Examples*



Wire/Cable Labeling



Faceplate Labeling



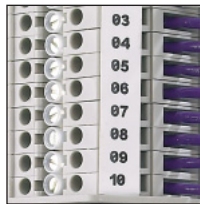
Pathway Labeling



Patch Panel Labeling

*Not all applications shown

Panel Building Application Examples*



Terminal Block Labeling



Safety Sign Labeling



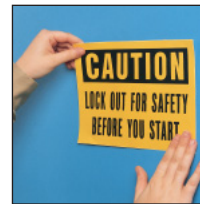
Wire/Cable Labeling



Heat Shrink Labeling

*Not all applications shown

Construction and Maintenance Application Examples*



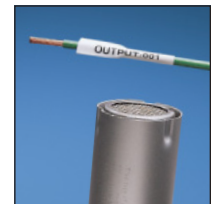
Safety Sign Labeling



Pipe Marking



Wire/Cable Labeling



Heat Shrink Labeling

*Not all applications shown

WORLDWIDE SUBSIDIARIES AND SALES OFFICES

PANDUIT CANADA
Markham, Ontario
cs-cdn@panduit.com
Phone: 800.777.3300

PANDUIT EUROPE LTD.
London, UK
cs-emea@panduit.com
Phone: 44.20.8601.7200

PANDUIT SINGAPORE PTE. LTD.
Republic of Singapore
cs-ap@panduit.com
Phone: 65.6379.6700

PANDUIT JAPAN
Tokyo, Japan
cs-japan@panduit.com
Phone: 81.3.3767.7011

PANDUIT LATIN AMERICA
Jalisco, Mexico
cs-la@panduit.com
Phone: 52.333.666.2501

PANDUIT AUSTRALIA PTY. LTD.
Victoria, Australia
cs-aus@panduit.com
Phone: 61.3.9794.9020

For a copy of PANDUIT product warranties, log on to www.panduit.com/warranty



For more information
Visit us at www.panduit.com
Contact Customer Service by email: cs@panduit.com
or by phone: 800-777-3300 and reference IDC835

©2007 PANDUIT Corp.
ALL RIGHTS RESERVED.
Printed in the U.S.A.
Product Bulletin Number WW-IDCB35
Replaces SA-IDCB28
3/2007